

Cemeteries

When planning a burial, it is imperative that the Municipal office be notified and we will collect the following details:

- Date of Birth
- Date of Death
- Marriage Date & Spouse
- Children
- *A funeral card is always appreciated*

Our Municipality strives to keep immaculate records for historical purposes.

Plot reservations can be made in the Carruthers - Hillcrest, Carruthers - Catholic, Baldwinton, and East Manitou - Woodlawn Cemetery.

Plots sell for 200.00 for the first burial and \$50 for subsequent burials within the same plot. Once fees are paid, a Deed will be issued.

Ensure the Deed is kept safely and relatives know where it is filed.

In the past our cemeteries were lovingly cared for by volunteers. Due to the decline in volunteers, the RM now contracts out cemetery maintenance.

All donations received, are directly allocated to the cemetery specified and a charitable donation receipt is issued.

Please make cheques payable to the RM of Hillsdale No. 440 with the cemetery noted on the note line. If making an e-transfer please note the name of the cemetery and the person in memory of if applicable. Once monies are received, donation receipts are prepared.

East Manitou - Woodlawn Cemetery

Note: East Manitou - Woodlawn does their own bookkeeping, please send donations to Box 141, Neilburg, SK S0M 2C0.

You've Got Mail

As a gentle reminder when you receive correspondence from the Rural Municipality of Hillsdale No. 440, please take a moment to look it over.

We only mail information we want you to know.

**Please check it out,
it may be something significant!**

Important deadlines can be missed when mail is not responded to.

We do not send out junk mail. Paper mail is still the best way to reach all of our rate payers, although emailing documents will be accommodated.

If you wish to receive correspondence via email, please visit our website, www.rmofhillsdale.com and fill in the E-Notice Consent Form, send it to us, and we will update your information.

Backroad Stunting

Our gravel roads are seeing an increased presence of 'stunting'. The RCMP have been notified to watch out for erratic driving behavior.

Leaving wavy grooves in the road surface or making circular ruts at intersections is a direct cause of road deterioration.

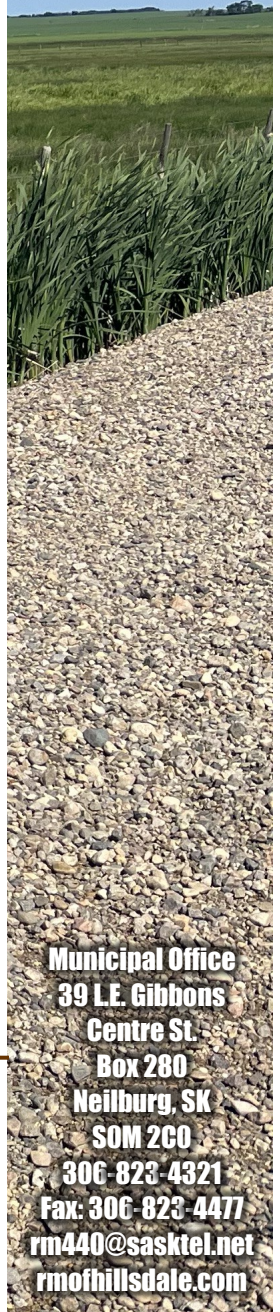
Roadways with ruts can alter the road surface posing a danger to other motorists.

Grader operators must delay regular road maintenance to repair these areas.

We would like to encourage persons attempting these 'stunts' to cease. We do not want to see anyone get hurt or any vehicle impacted by accident.

Summer 2025

440
Rural Municipality of Hillsdale

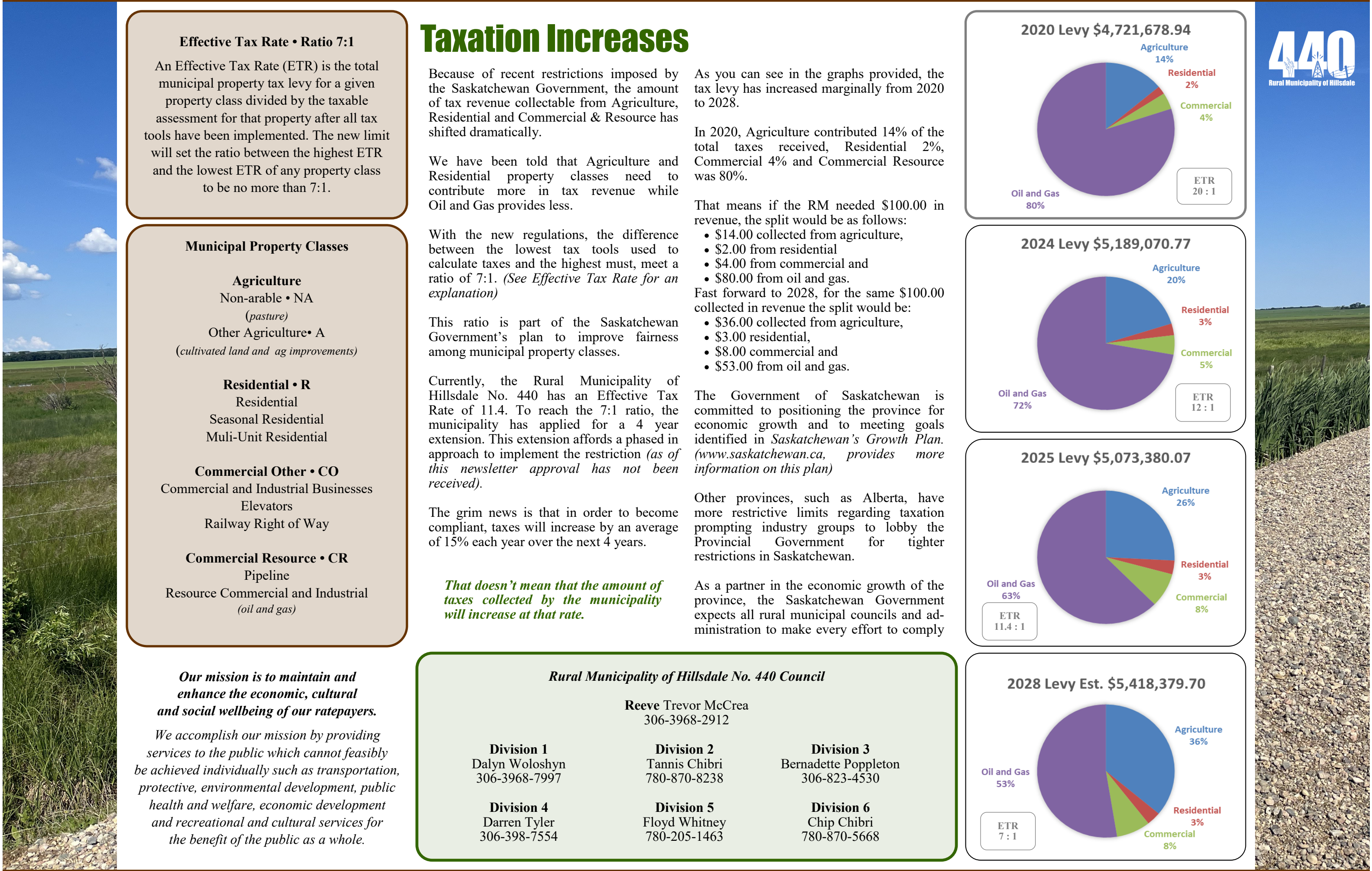


Municipal Office
39 E. Gibbons
Centre St.
Box 280
Neilburg, SK
S0M 2C0
306-823-4321
Fax: 306-823-4477
rm440@sasktel.net
rmofhillsdale.com

**RM440 Freemont
Transfer Station**

**Located 5.5 miles East &
1 miles South of Neilburg**

**Wednesdays • 9am to 5pm
Saturdays • 9am to 1pm**



Effective Tax Rate • Ratio 7:1

An Effective Tax Rate (ETR) is the total municipal property tax levy for a given property class divided by the taxable assessment for that property after all tax tools have been implemented. The new limit will set the ratio between the highest ETR and the lowest ETR of any property class to be no more than 7:1.

Municipal Property Classes

Agriculture

Non-arable • NA

(pasture)

Other Agriculture • A

(cultivated land and ag improvements)

Residential • R

Residential

Seasonal Residential

Multi-Unit Residential

Commercial Other • CO

Commercial and Industrial Businesses

Elevators

Railway Right of Way

Commercial Resource • CR

Pipeline

Resource Commercial and Industrial

(oil and gas)

Our mission is to maintain and enhance the economic, cultural and social wellbeing of our ratepayers.

We accomplish our mission by providing services to the public which cannot feasibly be achieved individually such as transportation, protective, environmental development, public health and welfare, economic development and recreational and cultural services for the benefit of the public as a whole.

Taxation Increases

Because of recent restrictions imposed by the Saskatchewan Government, the amount of tax revenue collectable from Agriculture, Residential and Commercial & Resource has shifted dramatically.

We have been told that Agriculture and Residential property classes need to contribute more in tax revenue while Oil and Gas provides less.

With the new regulations, the difference between the lowest tax tools used to calculate taxes and the highest must, meet a ratio of 7:1. *(See Effective Tax Rate for an explanation)*

This ratio is part of the Saskatchewan Government's plan to improve fairness among municipal property classes.

Currently, the Rural Municipality of Hillsdale No. 440 has an Effective Tax Rate of 11.4. To reach the 7:1 ratio, the municipality has applied for a 4 year extension. This extension affords a phased in approach to implement the restriction *(as of this newsletter approval has not been received)*.

The grim news is that in order to become compliant, taxes will increase by an average of 15% each year over the next 4 years.

That doesn't mean that the amount of taxes collected by the municipality will increase at that rate.

As you can see in the graphs provided, the tax levy has increased marginally from 2020 to 2028.

In 2020, Agriculture contributed 14% of the total taxes received, Residential 2%, Commercial 4% and Commercial Resource was 80%.

That means if the RM needed \$100.00 in revenue, the split would be as follows:

- \$14.00 collected from agriculture,
- \$2.00 from residential
- \$4.00 from commercial and
- \$80.00 from oil and gas.

Fast forward to 2028, for the same \$100.00 collected in revenue the split would be:

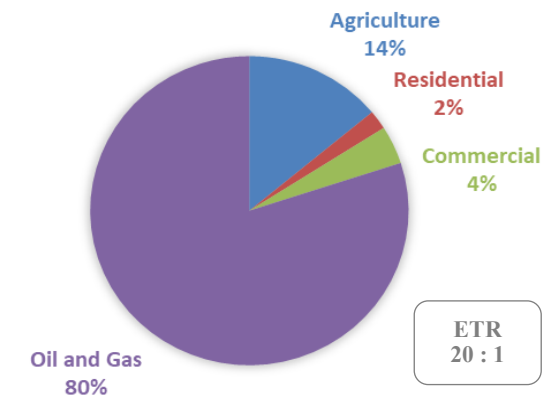
- \$36.00 collected from agriculture,
- \$3.00 residential,
- \$8.00 commercial and
- \$53.00 from oil and gas.

The Government of Saskatchewan is committed to positioning the province for economic growth and to meeting goals identified in *Saskatchewan's Growth Plan*. *(www.saskatchewan.ca, provides more information on this plan)*

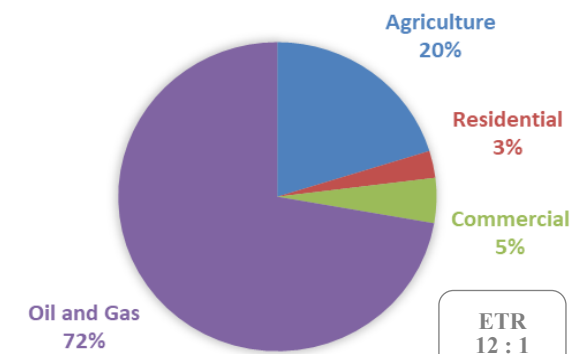
Other provinces, such as Alberta, have more restrictive limits regarding taxation prompting industry groups to lobby the Provincial Government for tighter restrictions in Saskatchewan.

As a partner in the economic growth of the province, the Saskatchewan Government expects all rural municipal councils and administration to make every effort to comply

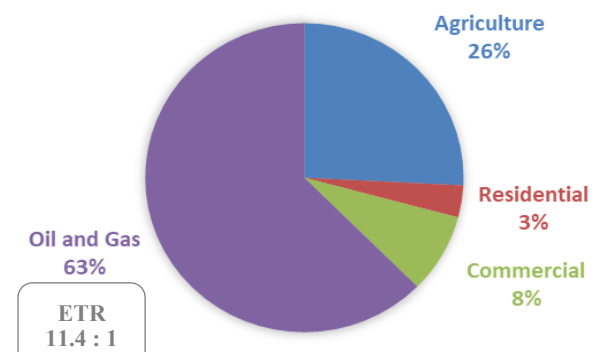
2020 Levy \$4,721,678.94



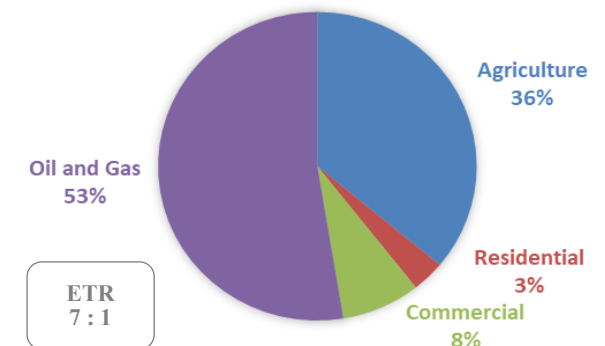
2024 Levy \$5,189,070.77



2025 Levy \$5,073,380.07



2028 Levy Est. \$5,418,379.70



Rural Municipality of Hillsdale No. 440 Council

Reeve Trevor McCrea
306-3968-2912

Division 1
Dalyn Woloshyn
306-3968-7997

Division 2
Tannis Chibri
780-870-8238

Division 3
Bernadette Poppleton
306-823-4530

Division 4
Darren Tyler
306-398-7554

Division 5
Floyd Whitney
780-205-1463

Division 6
Chip Chibri
780-870-5668

Payment Options\$

The RM of Hillsdale No. 440 has **FIVE** different ways to make tax payments.

IN PERSON

Cash or Cheques are accepted during regular business hours at 39 Centre Street in Neilburg. After hours, *cheques* may be left in the drop off box.

BY MAIL

Mail cheques to: Box 280, Neilburg, SK S0M 2C0. *Remember to mail early to avoid penalty charges.*

CREDIT CARD

Visa or Mastercard is accepted through Option Pay. You may access this online through our website, www.rmofhillsdale.com or at the municipal office. *Fees are charged to you for this service at time of payment.*

E-TRANSFER

Electronically through your banking institution using email: rm440@sasktel.net. (The RM has auto deposit so passwords are not necessary) *You may need to divide payments depending on your daily limit.*

CREDIT UNION PAYEE

The Rural Municipality of Hillsdale No. 440 is available as a payee (bill payment) through your Credit Union. *You will require your customer number from you tax notice which is displayed in the top righthand corner, in brackets to the right of your name.*

Property tax installments are accepted anytime throughout the year.

Taxes are due December 31 of each calendar year. Council sets the budget and levies taxes mid year. Tax notices are mailed shortly after. If you misplaced your copy, contact the Municipal Office and we can send you a copy by mail or e-mail.

Please remember when making payments electronically or by mail, to include your name and customer number. This helps to match payments made by company checks to the correct ratepayer.

Pest Control

The Pest Control Officer for the RM of Hillsdale No. 440 is:

Rob Knoll
780-999-4833

Rob visits yards, bin yards and vacant sites to ensure our rat population stays in check.

Strychnine is no longer available for purchase.

The RM of Hillsdale No. 440 does not supply control measures for gophers.

Contact G.D. Extermination Unity, SK for rodenticides supplies.

To get the best results, it is recommended to treat infestations before the grass turns green in the Spring.

Pest Biosecurity Program Gopher Control Program Claim Deadline is July 31, 2025



Producers, RMs and First Nations

are eligible to claim through the cost-share rebate program to control ground squirrel (Richardson's, Franklin's, thirteen-lined and northern pocket gopher) populations in Saskatchewan.

Scan the QR code or visit the SARM website at the link below for the GCP Program Guidelines and Claim Form.

sarm.ca/programs/sustainable-canadian-agricultural-partnership/gopher-control-program/



Pest Biosecurity Program Invasive Plant Control Program Claim Deadline is October 31, 2025



Producers, RMs and First Nations

are eligible to claim through the cost-share rebate program to assist with costs to control prohibited weeds and specific noxious weeds in Saskatchewan.

Scan the QR code or visit the SARM website at the link below for the IPCP Program Guidelines, Claim Forms and required supporting documents.

sarm.ca/programs/sustainable-canadian-agricultural-partnership/invasive-plant-control-program/

